



Radley Q*ADC

Supply Chain Mobile Computing and Workforce Automation



**“On-the-fly”
transaction capture
+
Bar Coding
+
RFID**

- **Real-time Supply Chain inventory & production visibility**
- **Eliminate redundant paperwork & data entry**
- **Reduce errors**

Productivity

- **Do more with less**
- **Compete with cheaper labor and lower costs**

Overview

Q*ADC – Maximize your investment in QAD

- Client/Server Architecture
 - Easily tailor mobile device user interface to individual worker assignments and plant/warehouse work flows.
 - Dynamic on/off line operation
 - All mobile hardware platforms supported
 - Minimal overhead/network traffic
- All MfgPro transactions are included: No inflexible modules to choose from
- Non-intrusive, real-time MfgPro updating. No QAD code modification.
- Combine and automate transactions, report and document generation, EDI notifications, etc.
- Seamless, simultaneous interface to multiple business systems.
- Scalable, multi-site design
- Written in Progress; same look and feel as MfgPro
- Runs on your MfgPro host server



Radley Corp

- QAD Alliance Partner since 1998
- Thirty years of ERP/EDI integration experience

ASAP, Inc.

- Provider of mobile data collection, inventory, materials and tracking applications since 1987.
- Radley business partner since 1998

Standard MfgPro Functionality

Includes all MfgPro Transactions

Shipping Your customer's final measure of performance is based on the accurate, on-time shipment of goods.

- Support all MfgPro Shipping methods
- Generate customer-specific shipping labels
- Launch related transactions /documents (Example: yard transfer, ASN, BOL)
- w/Intellilabel, the number of scans required to load a trailer is greatly reduced

Receiving The first step to accurate inventory is a controlled receiving process.

- Reduce/eliminate paperwork
- Labeling/Scanning: Scan vendor labels (cross-reference if needed) OR generate labels locally OR "Push" labels for your vendor to print and apply
- Launch related transactions (inventory transfer, work order issue, etc.)



Inventory management When inventory data is trusted less inventory can be carried, driving down carrying costs.

- Record inventory putaway, issues and transfers "on-the-fly."
- Query inventory status, locations, etc.
- Print labels on the fly, wirelessly
- Paperless wall-to-wall inventories and cycle counting

Production Real-time information from the shop floor is vital to your supply chain and productivity measurement.

- Support all MfgPro manufacturing modes
- Connect to scales, PLCs, etc.
- Real-time production visibility

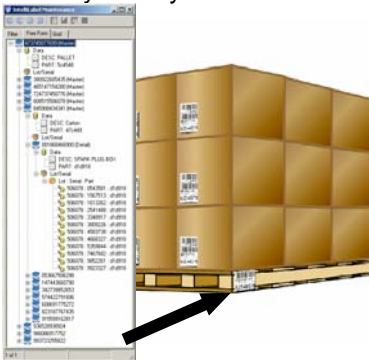
Service and Support Accelerate turnaround times: happy customers are repeat customers.



Optional Modules

Enhance MfgPro Functionality

Intellilabel This powerful function provides many opportunities to create unique and productive processes without customizing MfgPro. Intellilabel uses a serialized bar code or RFID tag to aggregate a hierarchy of items and related attributes (lot, weight, machine, location, PO, etc., etc.). A single scan of the Intellilabel launches any MfgPro transaction on all its associated items. Statuses assigned to Intellilabels error-proof operations by allowing or preventing specific operations. In addition, Intellilabeling provides a cradle-to-grave traceability history!



Labor Collection Accurate, timely shop floor labor data contributes to cost-effective manufacturing.

- Automatically calculate time expended on any MfgPro operation
- Record piece completion, scrap, backflush and labor in a single screen
- Schedule employees individually, by shift or by department
- Provide data for real-time queries, reporting and standard vs. actual cost analysis
- Supports crew and work-cell based labor
- Reconcile direct and indirect labor against payroll hours

Device Management

- Remotely deploy and update fixed and mobile computers from any networked location.
- Instant message production and warehouse workers.

Workforce Director Organize, automate and manage production and warehouse tasks based on

- Task priorities, such as Hot-Task Alerts
- Business rules, such as inventory levels and release schedules, wave or distributed picking, cycle counts, etc.
- Worker-initiated tasks, such as scanning a kanban card for replenishment.
- Worker skills
- Work zones
- Equipment requirements

Distribute tasks and communicate via

- Wireless mobile computer
- Workstation
- Email
- Text messaging

Report Productivity by

- Task type
- Completed tasks per day/shift/employee, etc.
- Elapsed time per task

Productivity Monitor

- Continuous process improvement
- Quickly identify and respond to problems
- User-defined dashboards graphically display key performance metrics and alerts in real time.
- XML messaging monitors and delivers event data from MfgPro and other applications.

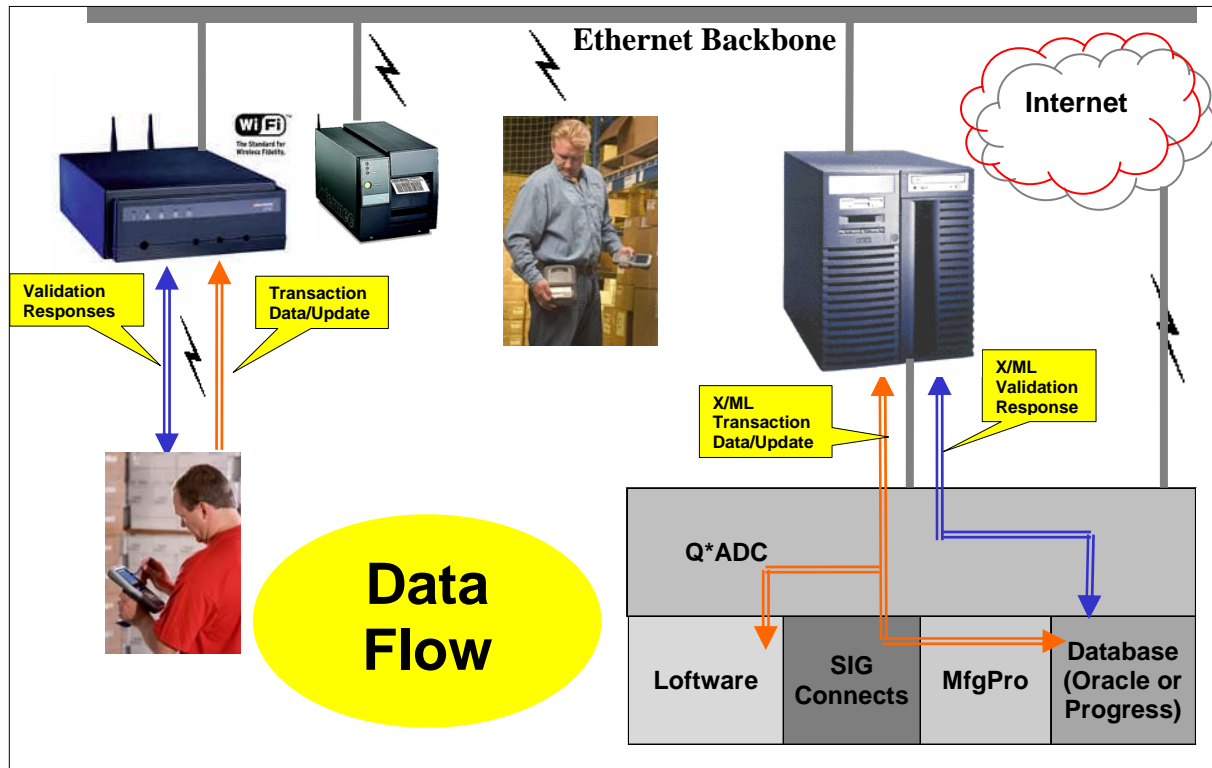
Web Supplier Labeling Incoming material arrives pre-labeled! It's easy for suppliers to bar code shipments according to your specifications. All they need is a Windows browser and a bar code printer!

Time & Attendance Streamline the collection and processing of work-time, overtime, shifts, vacations, breaks, holidays, etc.

- Eliminates the need for time clocks
- Output can be formatted for any payroll system
- Apply company pay rules
- Track piece work and point systems
- Provides for supervisor approvals



Q*ADC Architecture



Q*ADC is built on a philosophy that has evolved over years of experience with many manufacturing/distribution clients in a variety of industries. The primary lessons: 1.) No two companies operate the same and 2.) Software should accommodate procedures, not the other way around.

Q*ADC has four components:

- **Client Design Tool**
- **Portable Client**
- **Integration Server**
- **SIG Connects**

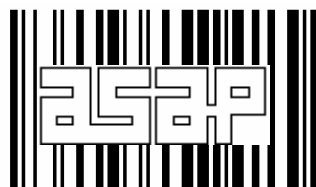
The **Client Design Tool** is a sophisticated program that can be used by non-programmers to develop flexible, versatile mobile device client applications in multiple languages. “Smart” menus and screens are unique for each user. “Intelligent” prompting eliminates unneeded prompts: No serial number prompt appears for an entered part number that is not serial-controlled. Non-variable data can be defaulted. A Visual Basic add-in, the **Client Design Tool** uses custom data collection controls and logic specific to mobile data collection. It creates mobile applications that compile to the **Portable Client** program, which runs on all industry-standard devices. Data collected on the **Portable Client** is validated one field at a time, “on-the-fly”. Completed transactions flow wirelessly as XML to the **Integration Server**. Running on the MfgPro server, the web-enabled **Integration Server** manages network traffic, integrates Software (see below), and submits validated transactions to **SIG Connects**, which updates QAD through its application layer.

Software Integrated Label/Printer Management

- Supports all printer brands
- Drag-and-drop label design
- Operates within QAD or independently
- Hundreds of predefined label formats

Integrated Hardware

- **ASAP** and **Radley** are Honors Partners of **Intermec Technologies**
- In addition, all industry-standard mobile and fixed computers, operating systems, scanners, printers, RFID technologies and wireless networks are supported.



ASAP, Inc.
 13101 W. Washington Bl. St. 228
 Los Angeles, Ca. 90066
 800-401-1739
 310-578-6766
www.asapla.com

Q*ADC – Sample of Supported Transactions

3.2	Inventory Inquiry
3.4.1	Single Item Transf
3.4.3	Transfer with Lot/Serial Change
3.7	Unplanned Issue
3.8	Issues - Return to Supplier
3.9	Unplanned Receipt
3.10	Receipts - S.O. Return
3.11	Receipts - Return to Stock
3.12	Receipts - Backward Exploded
3.14	Cycle Count Entry
4.11	Physical Inventory Tag Count Entry
4.12	Physical Inventory Tag Recount Entry
5.5.3.5	P.O. Shipper Maintenance
5.5.5.4	P.O. Container Maintenance
5.5.5.11	Confirm Shipper
5.13.1	PO Receipts
5.13.7	PO Returns
5.13.13	PO Container Maintenance
5.13.11	PO Shipper Receipt
7.1.6	Manual Allocations(Picking)
7.7.1/5	Shipping Container Workbench
7.9.2	Shipping Shipper Gateway
7.9.5	Shipping Shipper Confirm
7.9.15	Sales Order Shipments
12.15.20	Distributed Order Receipt
12.17.22	Distributed Order Ship
16.10	Work Order Component Issue
16.11	Work Order Receipt
16.12	Work Order Receipt Backflush
17.1	Labor Feedback by Work Order
17.2	Work Order Labor Feedback
17.4	Non-productive Labor Feedback
17.6	Operation Move
18.22.5.4	Sub Contract Container Maintenance
18.22.5.5	Sub Contract Shipper Maintenance
18.22.5.11	Sub Contract Shipping Issue
18.22.13	Advanced Repetitive Backflush
18.22.14	Advanced Repetitive Run Labor
18.22.15	Advanced Repetitive Setup Labor
18.22.16	Advanced Repetitive Reject
18.22.17	Advance Repetitive Rework
18.22.18	Advanced Repetitive Scrap
18.22.19	Advanced Repetitive Move
18.22.20	Advanced Repetitive Down Time
35.5	ASN Export